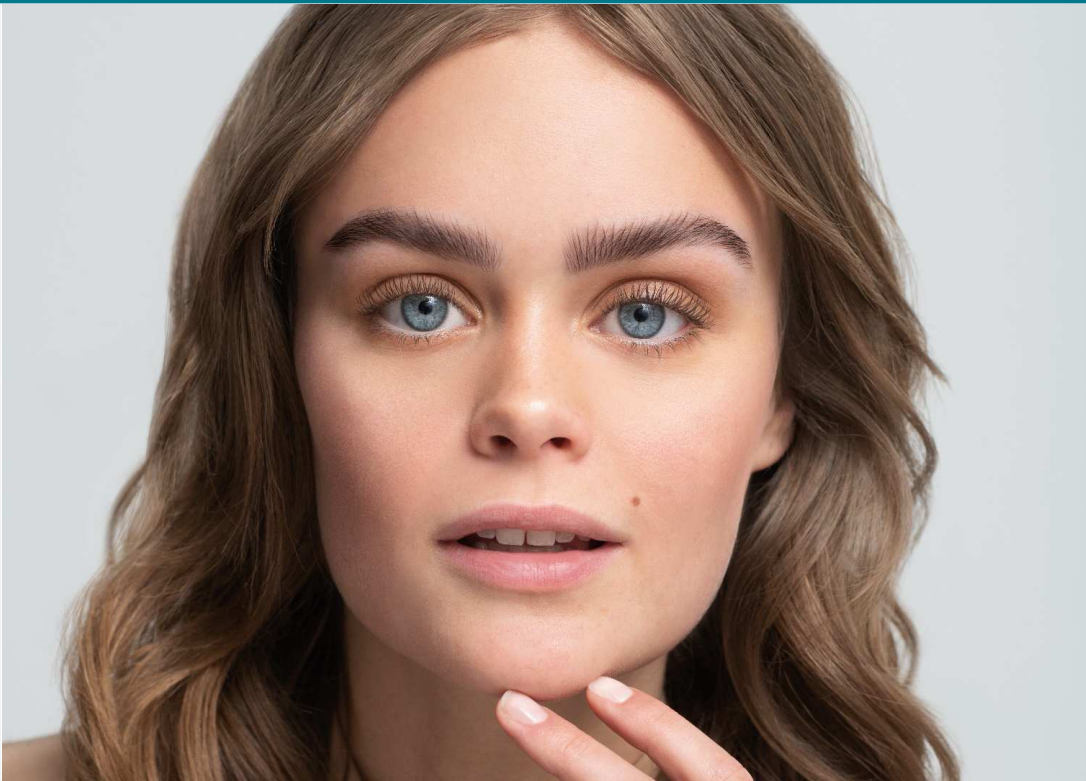


RefectoCil



Eyelash Lift by RefectoCil

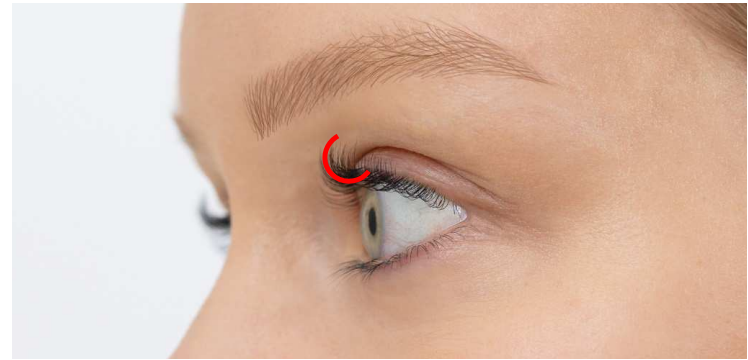
How to use – detailed step by step guide

Lovely Lashes with Eyelash Lift.

RefectoCil Eyelash Lift lifts the lashes for an intense, eye-opening look. The lift makes the natural lashes appear significantly longer and thicker.



The difference between Eyelash Lift & Eyelash Curl



Eyelash Lift	Eyelash Curl
Method: The eyelashes are fixed in a flat and upwards way on the lifting pad. The result is a straight lifting of the eyelashes.	Method: The eyelashes are applied in a curled way to the round eyelash roller. A crescent moon-shaped swing is created
Result: Significantly longer and fuller looking eyelashes. Replaces eyelash extensions. A slight curl is created, but not as strong as with Eyelash Curl.	Result: Evenly curved eyelashes. Replaces the mechanical eyelash curlers. No optical extension of the eyelashes.
Can be applied to all eyelash lengths	Best result for medium-long- to very long eyelashes
Lasts up to 6 weeks	Lasts up to 6 weeks
Duration of application: 40 minutes	Duration of application: 40 minutes

1 PREPARATION



First, **remove contact lenses**. Then **cleanse** the eye area with **RefectoCil Micellar Eye Make-up Remover**.



Then degrease the eyelids and eyelashes with **RefectoCil Saline Solution**.



To make it easier, you can place the **RefectoCil Eye Care Pads on the lower lashes to cover them**. This way you ensure that you only fix the upper lashes on the lash roller later.

2 SELECT LIFTING PADS

The shorter the lashes and the stronger the lifting effect desired by the customer, the smaller the pad size should be.

- S: strong lifting effect; especially for short lashes.**
- M: natural lifting effect; for normal lashes**
- L: discreet lifting effect; for very long lashes**



X



X



✓

Make sure that the lashes just end with the curvature of the lifting pads.

They should not protrude beyond it, as the effect could be too strong or nipped.

If the chosen pad is too large and the lashes end at the bottom of the curvature, a very weak effect will result.

3 FIXING LIFTING PADS



Apply sufficient **Glue to the back of the Lifting Pads** - allow to dry briefly.



Stretch the eyelid with your fingers and place the **lifting pad on the edge of the eyelid as close as possible** to the base of the lashes.



Now apply a little **glue to the curvature of the lifting pads** - allow to dry briefly.

4 FIXING LASHES



Fix the upper lashes with the **Eyelash Lifter**.
Using the **flat side of the Eyelash Lifter**,
sweep the lashes evenly and straight onto
the Lifting Pad.



If **individual lashes are crossed**, you must
carefully loosen them with the tip and then
fix them straight. For unruly lashes or those
that come loose again, **apply a little more**
RefectoCil Glue and fix the lashes again.



When all the lashes are just adhered, ask the
client to **open their eyes briefly**. This way you
can see if lashes from the lower lid are
accidentally stuck on the lifting pad. If so,
loosen them carefully with the Eyelash Lifter,
because only the upper lashes are lifted.

5 LASHPERM



Put a pea-sized amount of RefectoCil Lashperm 1 into the RefectoCil Cosmetic Tray 1. **Using the RefectoCil Cosmetic Brush 1, apply a strip of Lashperm 1 saturating the middle area of the lashes.**



Application time: 8 minutes.



After the application time, **dab Lashperm 1 with a dry cotton swab.**

6 NEUTRALIZER



Put a pea-sized amount of RefectoCil Neutralizer 2 into the RefectoCil Cosmetic Tray 2. **Using the RefectoCil Cosmetic Brush 2, apply a strip of Neutralizer 2 saturating the middle area of the lashes.**



Application time: 5 minutes.



After the exposure time, **dab Neutralizer 2 with a dry cotton swab.**

7 COLOURATION & AFTERCARE



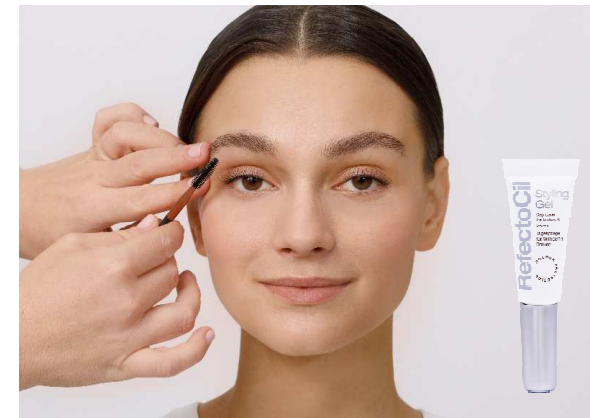
Now the lashes can be tinted with **RefectoCil colour directly on the lifting pads**. The application time is only **2 minutes!**

To avoid colour stains on the Lifting Pads, do not leave the colour on for longer than 2 minutes. Rinse immediately after application.



Then remove the paint with a **damp cotton pad**.

Run a damp cotton pad over the pads several times; the moisture loosens the adhesive. Then stretch the eyelid and remove the lifting pads from the outside to the inside.



For optimal care, apply **RefectoCil Styling Gel at the end**.

For hygienic reasons, it is important **not to use the same brush on all clients**.

Remove the styling gel from the tube with a clean RefectoCil brush and **apply it with the rubber spouli**.

EYELASH LIFT CHEAT SHEET

PREPARATION



FIXING LASHES



LASHPERM



8 min



NEUTRALIZER



5 min



RefectoCil COLOURATION & AFTERCARE



2 min



How safe is the treatment?

The treatment is absolutely safe! All products are developed under the strictest guidelines especially for the eye area and are very well tolerated. Make sure you adhere to the specified exposure times. In addition, the Lashperm contained in Eyelash Lift contains care components such as collagen and cysteine, which nourish the hair during the treatment.

What should be observed after the treatment?

After the lifting, the eyelashes are malleable and still somewhat flexible. Therefore, they should not come into contact with water or steam for 24 hours after the treatment. Mechanical movements such as strong rubbing, but also swimming and taking a sauna should be avoided for the first 24 hours after the treatment. Your client should not apply mascara. After 24 hours the shape is fixed and the client can style, wet etc. the lashes as usual. Even sauna and swimming pool are no longer a problem.

Do the lashes need special care after the application?

After the treatment, RefectoCil Styling Gel provides the perfect care and nourishes the hair. For home care, RefectoCil Care Balm is also recommended. The rich formula strengthens the hair and makes it resistant. Attention: Apply Care Balm only after 24h. The oily formula could weaken the result.

Does the treatment also work on short lashes?

Lash Lifting is possible for all eyelash lengths. And especially with short lashes, the lifting makes a great effect! Depending on the length, you can choose between 3 lifting pad sizes. However, if the lashes are so short that even the smallest lifting pad is too big, we recommend treating the lashes with the RefectoCil Lash & Brow Booster for at least 6 weeks to make them longer.

How often can Eyelash Lift be repeated?

The service can be repeated at any time if the effect weakens and wears off or after 4-6 weeks.

What is the difference to Eyelash Curl?

With Eyelash Curl, the eyelashes are wrapped over a roller and the bow is fixed. In this way they are curved but not visually lengthened. With Eyelash Lift, the lashes are stretched upwards directly from the lash line and thus visually lengthened.

Can the client still use mascara despite Eyelash Lift?

Yes, mascara can be applied 24 hours after the application. The mascara visually enhances the lifting effect. We do not recommend using waterproof mascara, as heavy cleansing with oil-based products can affect the durability and health of the lashes.

How can you prevent the lashes from coming loose during the treatment?

Use enough glue to fix the lashes on the lifting pad. After fixing the lashes, wait one minute before applying Lashperm to allow the glue to dry completely. When you touch the lashes with your finger, they should be dry and not sticky.

What can I do if individual lashes come loose during the Eyelash Lift treatment?

remove the active ingredients, apply more glue, wait 15 seconds and fix the lashes again.

What is the best way to fix the lashes on the lifting pad?

Apply Eyelash Lift Glue generously to the first part of the pad and the lashes. Wait 15 seconds. Then fix the first part of the lashes. Repeat from section to section until all lashes are fixed.

Where should the active ingredients be applied?

Apply both LashPerm(1) and Neutralizer(2) as a narrow and horizontal strip starting from the middle part of the lashes to the bottom. The tips remain uncovered. Tip: Use the broad side of the brush to apply the products more quickly and easily.

Why is it not necessary to apply the active ingredients to the entire lash?

It is a chemical process that takes place inside the hair. Even though Lashperm and Neutralizer are only applied to the lower part of the lash, they penetrate the entire hair evenly.

How many times can I reuse the Lifting Pads?

The specially developed pads can be reused up to 100 times with careful maintenance.

Can I use RefectoCil Eyelash Lift or Eyelash Curl on pregnant clients?

In general, we see no problem with using RefectoCil Eyelash Lift or Eyelash Curl during pregnancy. We have no information on negative effects of application during pregnancy. However, please note that we have not conducted any specific studies with pregnant women. Furthermore, as a manufacturing company, we do not have the necessary medical knowledge. We recommend consulting your doctor before use.

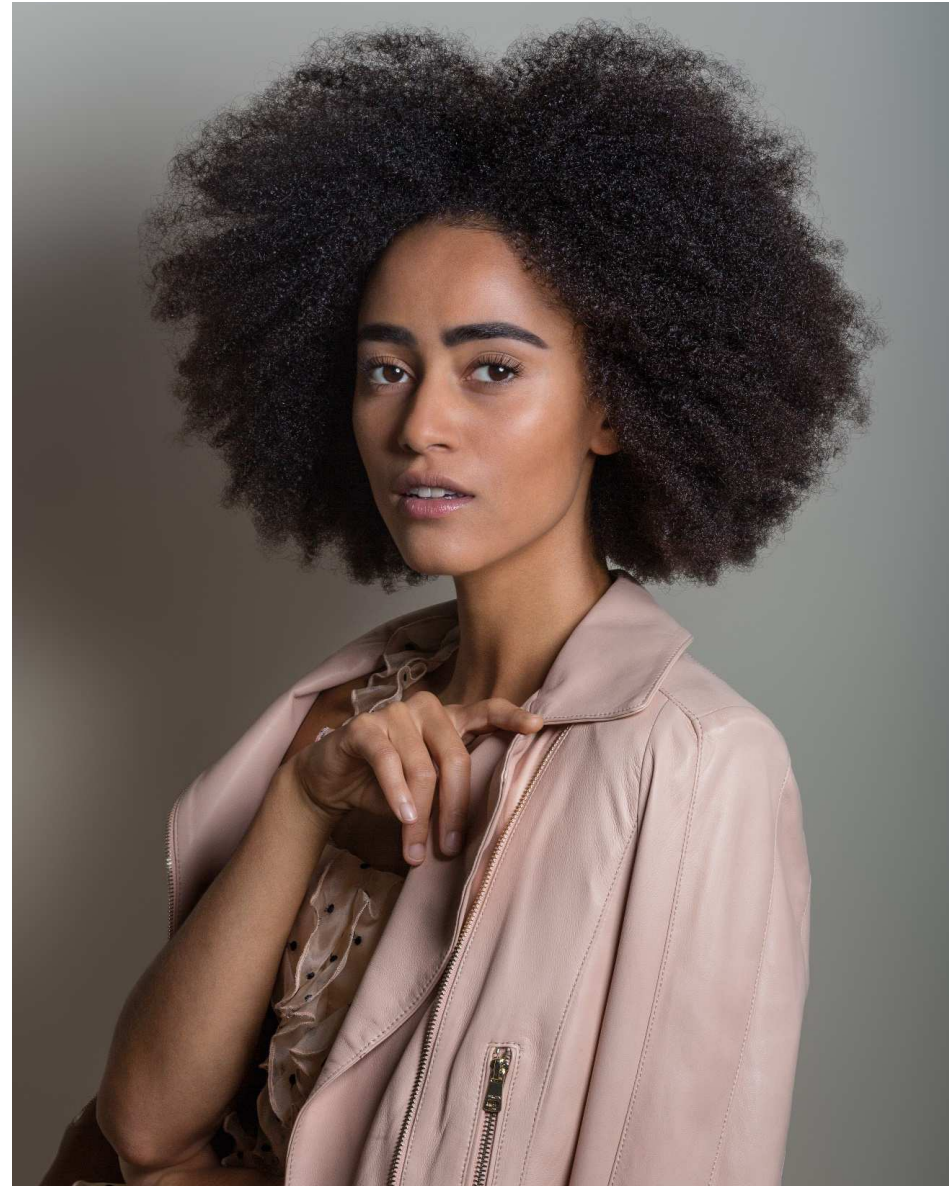
Is RefectoCil Eyelash Lift vegan?

No. RefectoCil Eyelash Lift contains Hydrolyzed Collagen.

Are RefectoCil products tested on animals? No. All our products are developed and tested without animal testing in accordance with the regulations of the EU Cosmetics Directive.

Where are RefectoCil products manufactured?

The products are manufactured in Austria.





We are always happy to support you!

For further questions please contact the RefectoCil Australia sales team.

Email sales@refectocil-australia.com.au

Phone (02) 7200 8452

Instagram @refectocilaustralia

Facebook facebook.com/refectocilaustralia