

RefectoCil

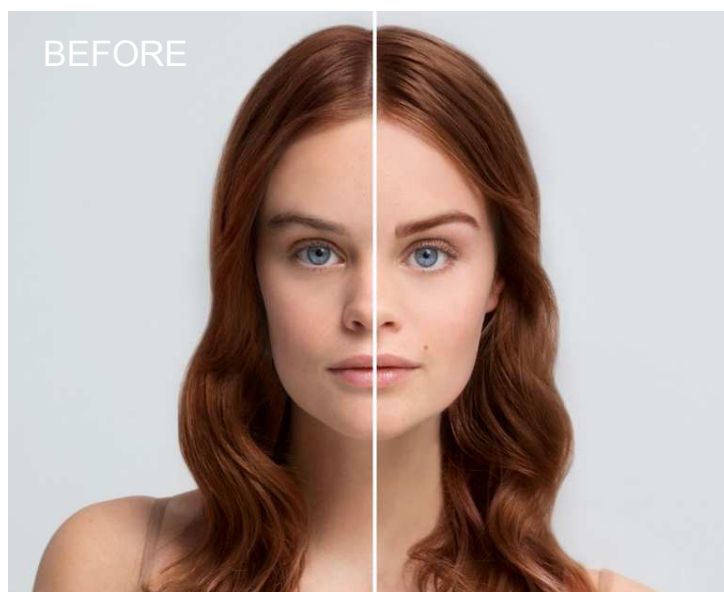


Eyebrow Colouration by RefectoCil

How to use – detailed Step by Step guide


WOW Brows!

Appropriately highlighted Eyebrows, the ideal frame for the face.




COLOUR WORLD

RefectoCil



1. Pure Black

RefectoCil Nr. 1 Pure black is an exceptionally intense, clear and strong colour. Add deep black to any other RefectoCil eyebrow and eyelash color to get a darker color result!




1.1 Graphite

RefectoCil Nr 1. 1 Graphite provides an even and natural coverage of gray and white hair. Add graphite to any other RefectoCil eyebrow and eyelash color to get a cooler shade! Perfect also for customers who want a discreet, only slightly defined result.



2. Blue Black

RefectoCil Nr. 2 Blue Black is a deep, brilliant shade. In combination with the deep black color you achieve more color depth. Mixed with the color deep blue the result becomes more radiant. If the desired colour is a dark purple, mix black, deep blue and red together. Tip: Brings green eyes especially to glow!



2. Deep Blue

RefectoCil Nr. 2. 1 Deep blue is a clear, cold blue hue. The colour is particularly suitable for blond eyelashes, as the result looks very natural. Combined with the colors deep black and blue black you create more color depth. Mix deep blue and red together, you get purple.

COLOUR WORLD

RefectoCil



3. Natural Brown

RefectoCil Nr. 3 Natural brown is a powerful brown shade. Mix natural brown with light brown to create a variety of brown tones. Combined with red or chestnut you get a natural, soft result. Together with graphite, the brown shade becomes cooler.



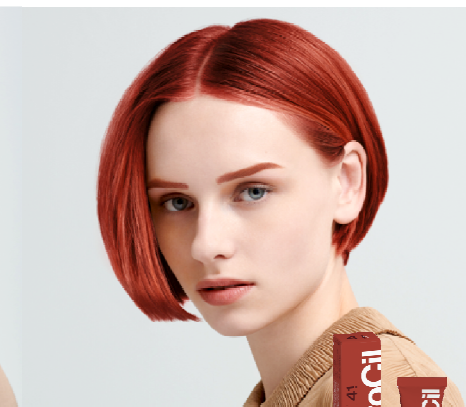
3.1 Light Brown

RefectoCil Nr. 3.1 Light brown is a natural, warm and light brown shade. Mix light brown with natural brown to create a variety of shades of brown. Combined with red or chestnut you get a natural, soft result. Together with graphite, the brown shade becomes cooler.



4. Chestnut

RefectoCil Nr. 4 Chestnut is a warm brown shade with a subtle red content. Add chestnut to any other RefectoCil eyebrow and eyelash color to get a warm and natural shade. Mixed with the color red, the result becomes more intense.



4.1 Red

RefectoCil Nr. 4.1 Red is a very strong shade. Add red to any other RefectoCil eyebrow and eyelash color to get a more intense, warm shade! Mixed with the chestnut color, the result becomes softer. Mix red and deep blue together, you get a beautiful purple.

1 PREPERATION



Clean the eye area thoroughly with the **RefectoCil micelle eye make-up remover**.



For **dry or flaky skin**, apply a **gentle peeling** on the eyebrows before colouring.

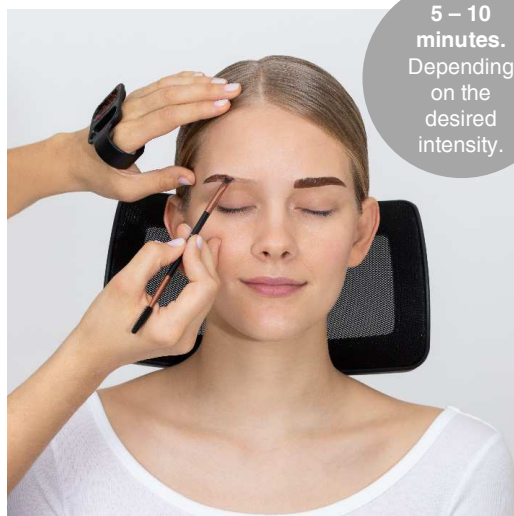


Mix approx. **2 cm** of the desired **RefectoCil eyebrow and eyelash colour** with the **oxidant cream 3% or the oxidant liquid 3%** in the Browista palette.

Mixing ratio:

2 cm color + 2 cm oxidant cream or
2 cm colour + 10 drops of oxidant liquid

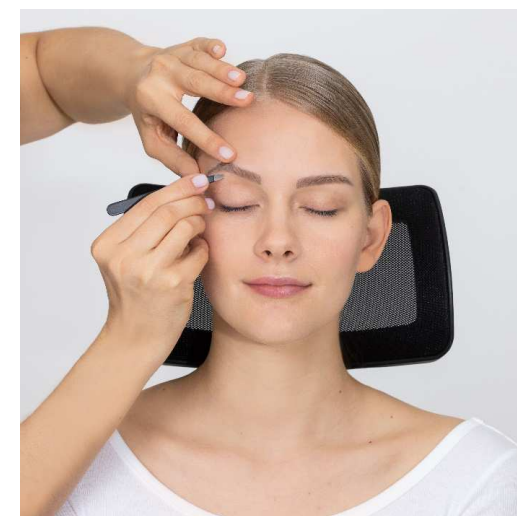
2 COLOURATION & AFTERCARE



Apply the color to the eyebrows **evenly in the direction of hair growth with the RefectoCil brush**. With the Rubber Spouli you can also **comb through** the eyebrows so that the hairs are wellcovered with color on all sides.



After the exposure time, remove the remaining color with a **damp cotton pad** and clean the eyebrows by brushing both in and against the direction of hair growth.



Now the eyebrows can be shaped with the **RefectoCil Precision Brow Tweezer**.

Important: Always dye first and then shape the eyebrows. After hair removal, the hair follicles are opened. Penetrating colour may lead to redness, skin irritation or discoloration of the skin.

2 COLOURATION & AFTERCARE



For a long-lasting and well-groomed result, **apply the RefectoCil Styling Gel.**

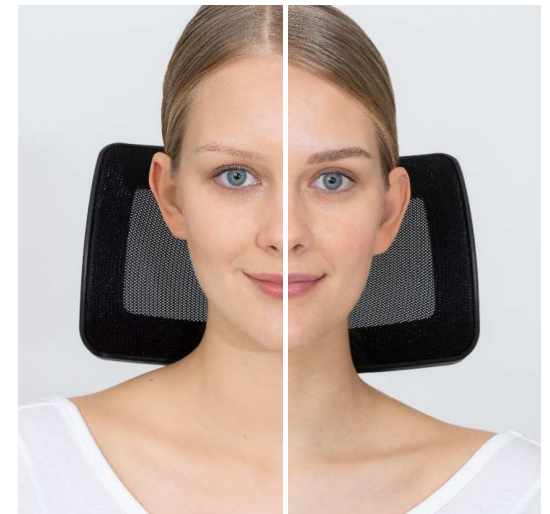
Tip: Eyebrows and eyelashes can also be dyed simultaneously. It is advisable to start with the eyelash color, as it usually works for longer (10 minutes).



Browista Tipp

For hygienic reasons it is important **not to use the same brush on all customers.**

Remove the styling gel from the tube with a clean RefectoCil brush and **apply it with the rubberspouli.**



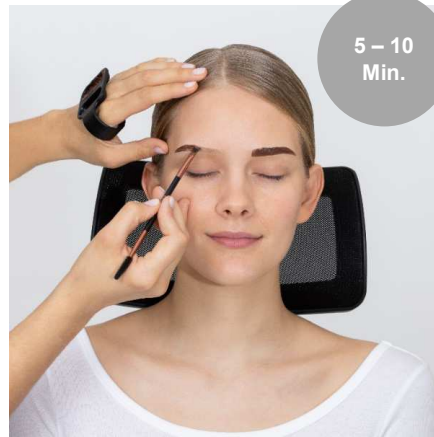
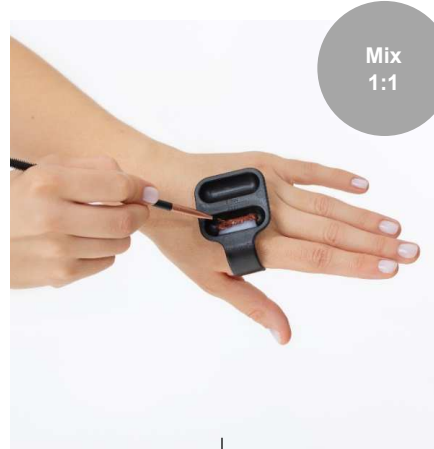
The result: **Type-appropriate eyebrows as the natural frame for the face.**

RefectoCil

1. PREPARATION



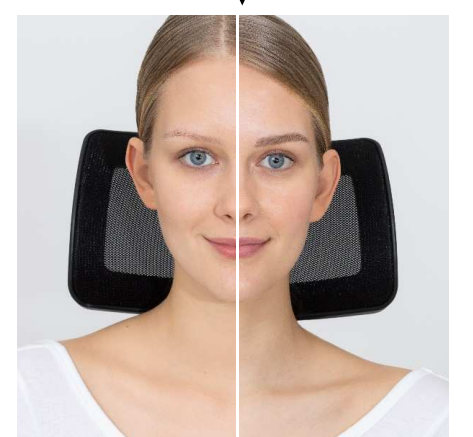
2. COLOURATION



3. CLEANSING/SHAPING



4. AFTERCARE



FAQ's

RefectoCil

Should I shape or dye the brows first?

Dye first, then remove hair to avoid skin irritation.

The brows are freshly dyed. How long should I wait to apply the Care Balm?

The Care Balm is the ideal night care after colouring, but you should allow 24 hours to pass, as the high fat content of the Care Balm could negatively influence the colouration result.

Coloured hair needs care. How about coloured eyelashes and eyebrows? They also need care. For this there is the RefectoCil Care Balm, our intensive treatment for the night with castor oil. With the Styling Gel, the daily care, unruly hairs can be brushed in shape. At the same time, it provides colour protection and care.

Why should the eyebrows not be coloured after using self-tanning agents?

We do not recommend this, as a yellowish discoloration of the skin may result.

My client has blonde hair. Which eyebrow color fits best?

For a natural look, the brows should always be 2 shades darker than the head hair. Contrast Brows are ideal for a dominant and eye-catching look.

My client has red hair. What is the best way to customize her brows?

For red accents, simply mix some red with the desired colour or dye with pure red if a pronounced result is desired.

How do I find out which eyebrow colour suits my customer best?

The eyebrow colour should be selected according to the skin type and always reflect a colour aspect of the hair colour.

How long should I leave the colour on my eyebrows?

The application time varies from person to person, it depends on the respective hair structure. Basically, the following applies: At least 3 minutes. The longer the application time, the more intense the result. Red tones need longer to develop. The exposure time for RefectoCil red is 10-20 minutes, for chestnut 10 minutes. Tip for beginners: Remove the colour paste from the end of an eyebrow after 2-3 minutes and check the result or present it to the client. If the colouring result is not intense enough, apply the colour paste again and let it work for a longer time.

How do I find out which eyebrow colour suits the client best?

The eyebrow colour should be chosen according to the skin type and always reflect a colour aspect of the hair colour.

I have unintentionally coloured the skin. What can I do?

With the RefectoCil colour stain remover, the skin staining can be easily removed. Tip: The quicker the colour stain is treated, the easier it is to remove again.

Which colours are particularly suitable for discreetly emphasising the brows on men?

Graphite and light brown are especially recommended for the discreet accentuation of men's brows!

Are RefectoCil colours and the Oxidant Cream&Liquid vegan?

Yes, the products are vegan, i.e. they do not contain any raw materials of animal origin.

Are RefectoCil products tested on animals?

No. All our products are developed and tested without animal testing in accordance with the regulations of the EU Cosmetics Directive.

Where are RefectoCil products manufactured?

The products are produced in Austria.

EYEBROW TINTING



RefectoCil

We are happy to support you at any time!

For further questions please contact the RefectoCil Australia sales team.

Email sales@refectocil-australia.com.au

Phone (02) 7200 8452

Instagram @refectocilaustralia

Facebook facebook.com/refectocilaustralia