



**RefectoCil®**  
*Academy*

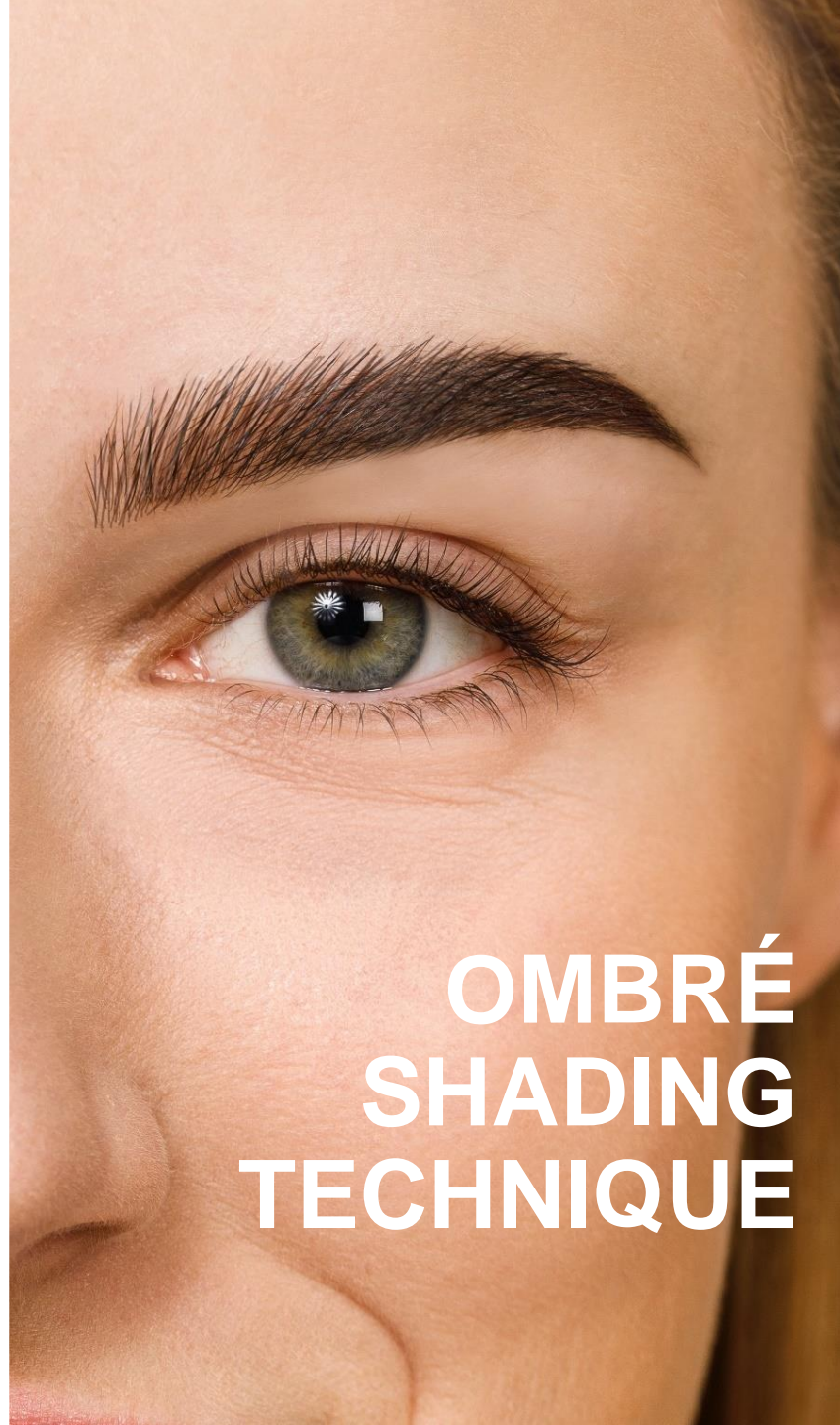
GW COSMETICS®

**INTENSE BROW[N]S**  
by RefectoCil®

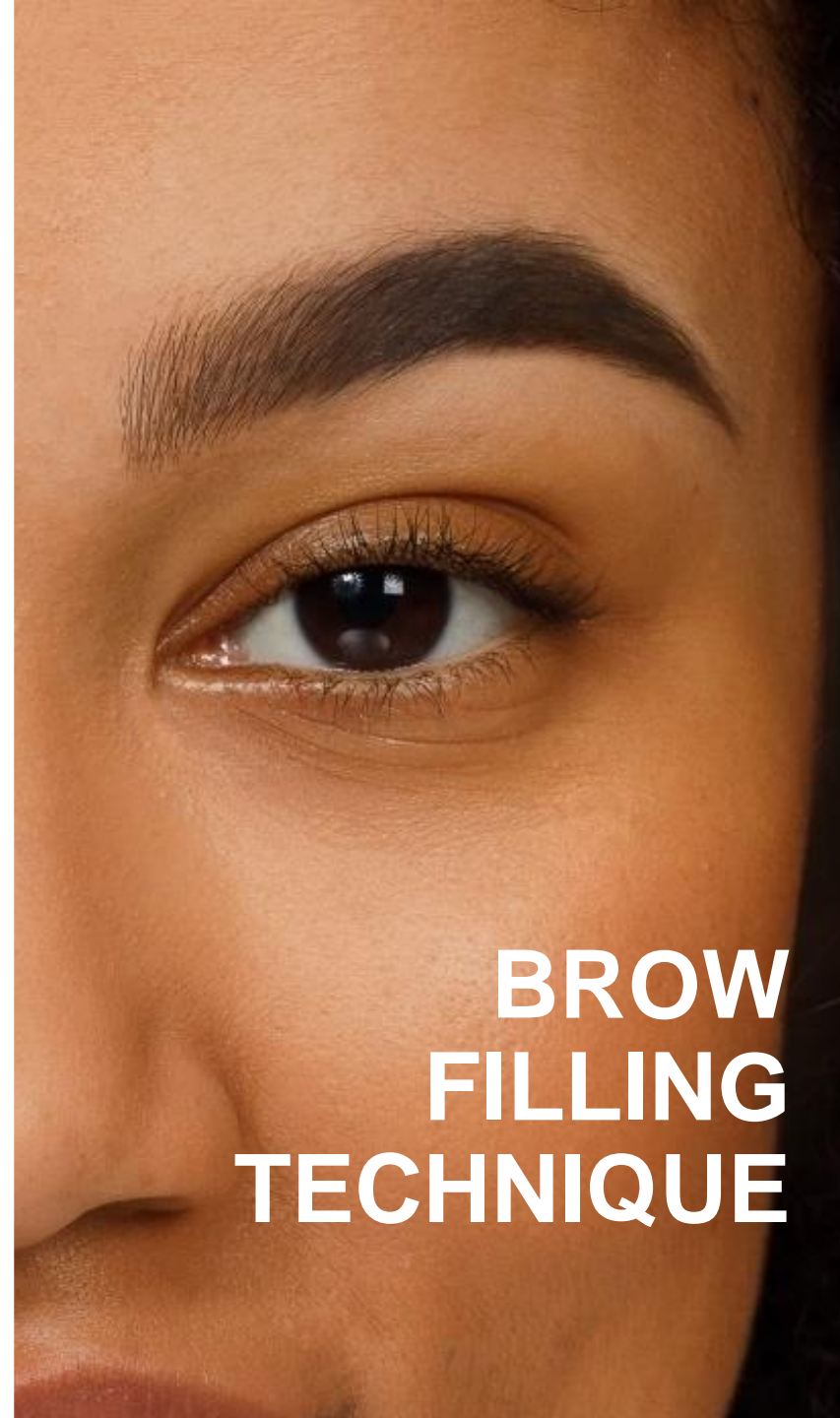
How to use – Step by step guidelines



**FULL  
BROW  
TECHNIQUE**



**OMBRÉ  
SHADING  
TECHNIQUE**



**BROW  
FILLING  
TECHNIQUE**



## FULL BROW TECHNIQUE



The Full Brow Technique is the basic application that ensures a smooth and full-surface color build-up on the skin and hair. For a particularly intense look

Ideal for: Customers who want a strong effect or where a remodeling of the eyebrow is necessary, e.g. hairs are missing.

03

FULL BROW



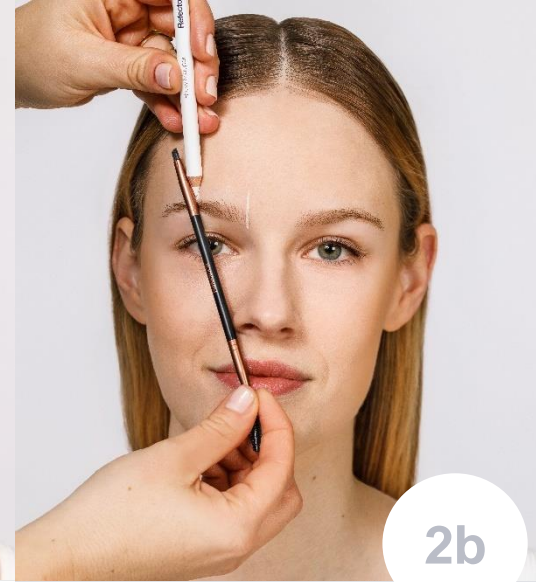
## Cleaning

Clean eyebrows before tinting using the **RefectoCil Micellar Eye Make-up Remover** (or **RefectoCil Brow & Lash Foam**) and **RefectoCil Saline Solution**. If the skin is very dry, exfoliate the eyebrow area with a soft peeling product (e.g. **MasterLin Facial Peeling**)



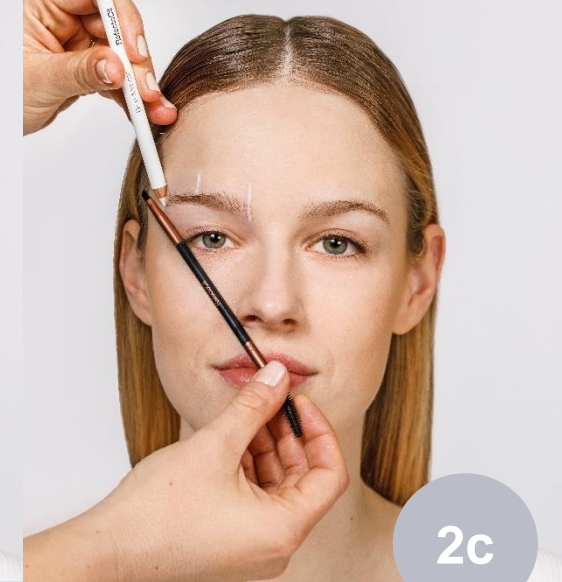
## Mapping

Measure the perfect brow shape with the **RefectoCil Brow Mapper**.  
Start of eyebrow: Don't hold the brush to the outer edge of the nose, but to the nostril: This is where the eyebrow begins.



## Mapping

Beginning of arch: Hold the brush at an angle across the eye, through the outer edge of the pupil: This is where the arch begins.



## Mapping

End of eyebrow: Hold the pen at an angle from the nostril to the outer corner of the eye: This is where the eyebrow ends.



2d

## Mapping

Connect the lines and draw a frame in the desired shape of the brows.

For the most precise shape, use the advanced Brow Mapping method.



3

## Primer

Choose the product according to the skin type. Open the **Intensifying Primer** and put a pea-sized amount into one of the cosmetic dishes. Apply the **Intensifying Primer** to the eyebrows and skin with the RefectoCil cosmetic brush. **Application time: 4 minutes.**



4

## Remove

Remove the **RefectoCil Intense Brow[n]s Intensifying Primer** using a dry cotton swab.



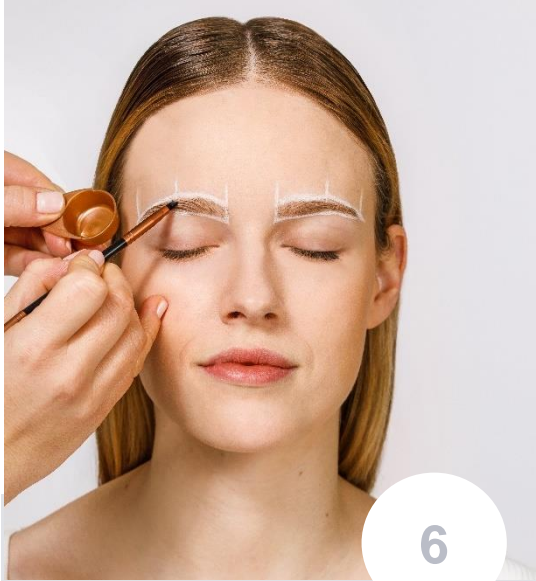
5

## Wait!

Important: Let the brows dry for **4 minutes** before the next step! To achieve best results the brows have to be dry before the next step.

03

FULL BROW



6

### Base Gel

Use a clean brush. Select the desired colour. Open the **Base Gel (Step 1)** and squeeze a pea-sized amount of it into a clean cosmetic dish. Apply the **Base Gel** to brows & skin evenly in the direction of hair growth. **Application time: 2 minutes!**



7

### Remove

Remove **Base Gel** using a dry cotton swab.



8

### Wait!

Important: Let the brows dry for **4 minutes** before the next step.



9a

### Activator Gel

Use a clean brush. Open the **Activator Gel (Step 2)**. Squeeze a pea-sized amount of the **Activator Gel** into a clean cosmetic dish and apply the Activator Gel to brows & skin. **Start brushing at the end of the brow.**

03

FULL BROW



9b

### Activator Gel

Continue to the middle and front part. Work very precisely.

**Application time: 1 minute**

(Activator Gel lets the hair appear to be very dark, but this is not the final tinting result)



9c

### Activator Gel

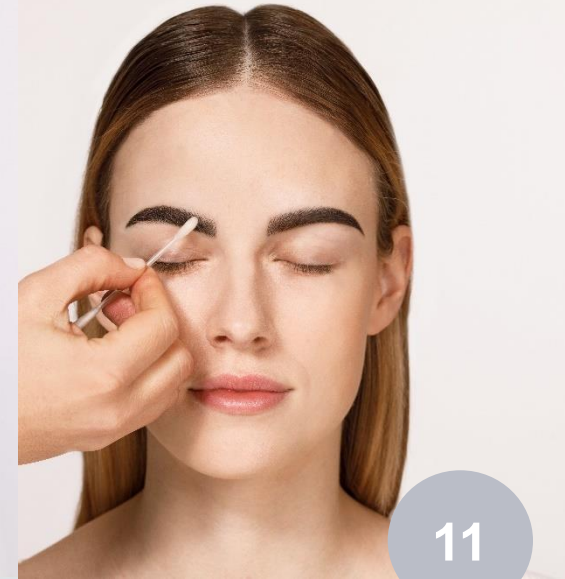
If needed: Use a little bit of RefectoCil Skin Protection Cream & Eye Mask to correct the brow shape.



10

### Remove

Remove Activator Gel with a wet cotton pad.



11

### Final Touch

Remove any unwanted stains using a dry cotton swab with the RefectoCil Intense Brow[n]s Tint Remover. Use the RefectoCil Intense Brow[n]s Tint Remover to correct the shape of the brows if needed or to remove tint spots.

03

FULL BROW



## Shape

Now you can shape the brows with the **RefectoCil Precision Brow Tweezer**.



## Care

Apply the **RefectoCil Styling Gel** to nourish the eyebrow hair and provide shine.



## Care

Info - In the salon:  
For hygienic reasons it is important not to use the same brush on all customers.  
Remove the **Styling Gel** from the tube with a clean RefectoCil brush and apply it with the rubber spoolie.



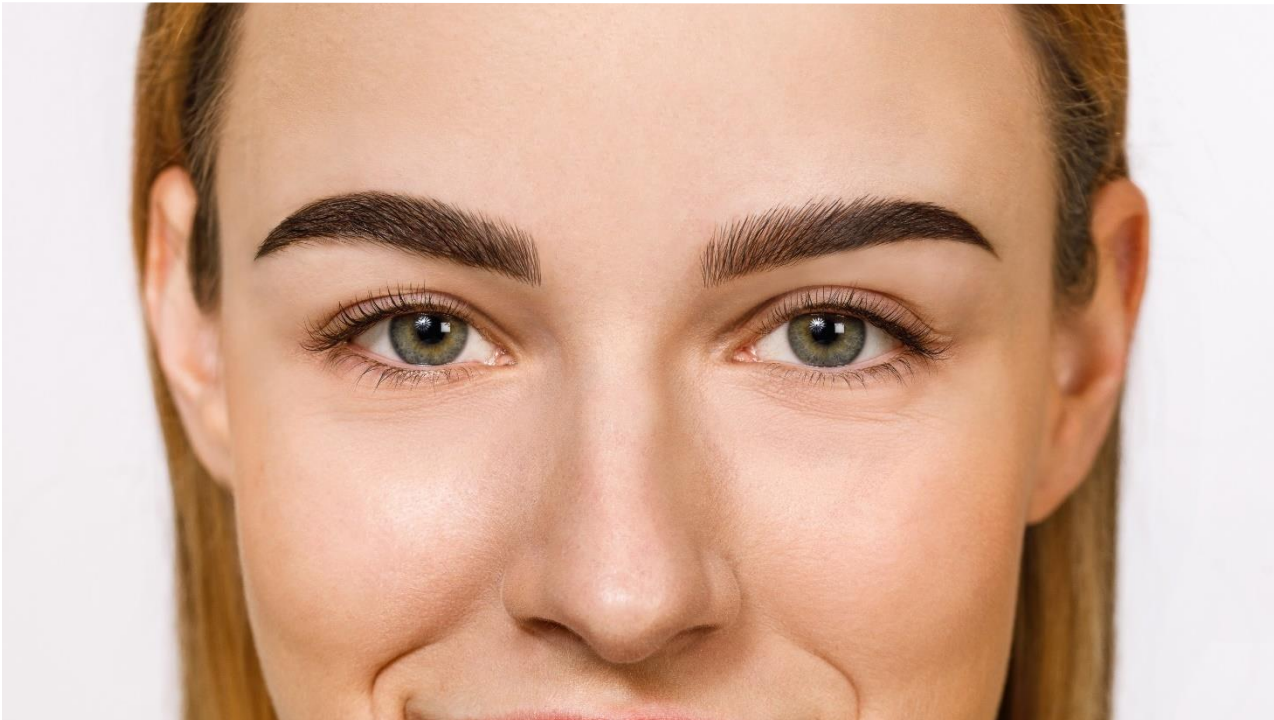
## Effect

Full Brow Look





# OMBRÉ SHADING TECHNIQUE



The Ombre Shading Tequique ensures a wonderful and gentle color gradient. The eyebrow is intensely emphasized in the back, while it becomes brighter in the front third, providing a very natural, feathery-light look.

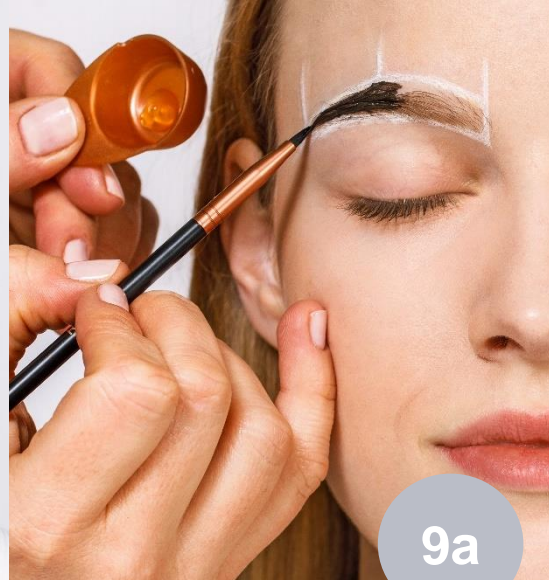
Ideal for: Customers who want a natural look and where no remodeling of the eyebrows is necessary.

03\_ OMBRÉ



## Repeat!

The Ombré Shading differs from the Full Brow technique in the way the **Activator Gel** is applied. Therefore, repeat steps 1-8 of the Full Brow technique.



## Activator Gel

Use a clean brush. Open the **Activator Gel (Step 2)**. Squeeze a pea-sized amount of the **Activator Gel** into a clean cosmetic dish and apply the Activator Gel to brows & skin. **Start brushing at the end of the brow.**



## Activator Gel

Continue to the middle and front part. Work very precisely. **Application time: 1 minute** (Activator Gel lets the hair appear to be very dark, but this is not the final tinting result)



## Use rubber spoolie

In the front area of the eyebrow, apply the **Activator Gel** with the spoolie and be careful not to touch the entire surface of the skin.

**Application time: 1 minute**



### Use rubber spoolie!

In the front area of the eyebrows, focus on the hairs instead of the skin. Slightly brush the eyebrows to create a smooth effect.



10

### Remove

Remove Activator Gel with a wet cotton pad. Remove any unwanted stains or correct the shape with **RefectoCil Intense Brow[n]s Tint Remover**.

Now you can shape the brows. Apply the **RefectoCil Styling Gel** to nourish the eyebrow hair and provide shine

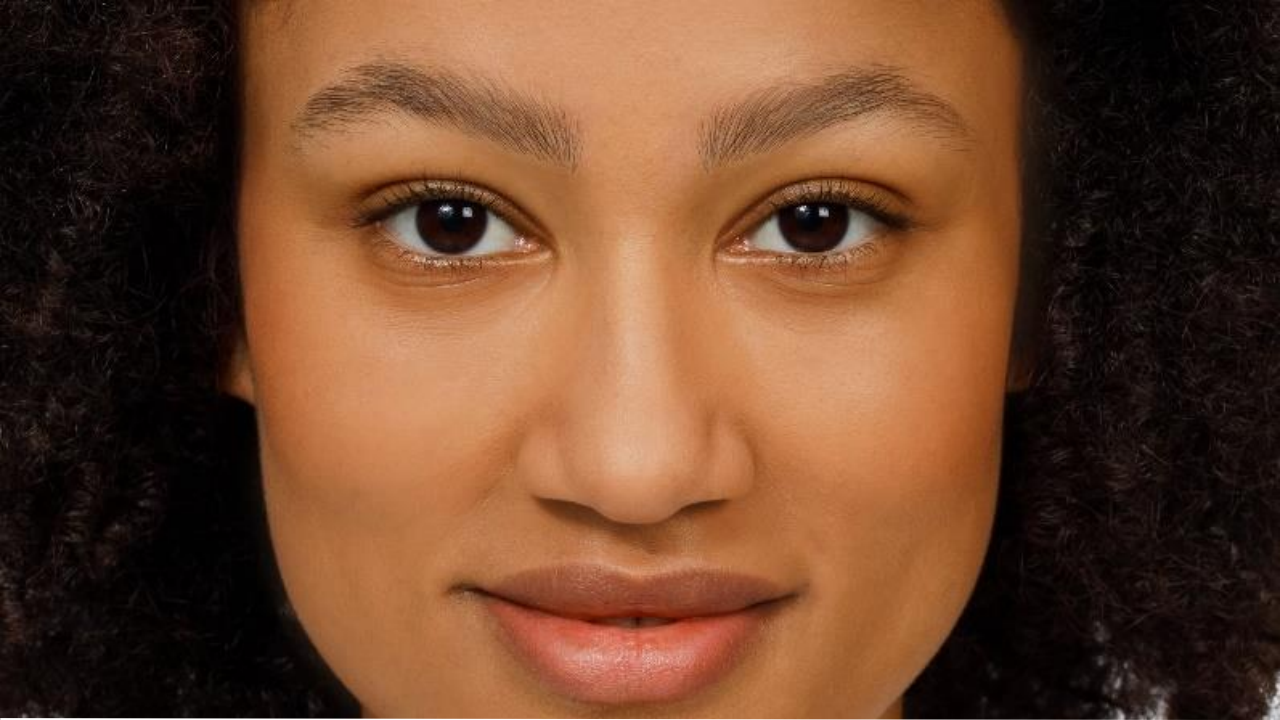


WOW!

### Effect

Ombre Shading Look

03\_ OMBRÉ



## BROW FILLING TECHNIQUE

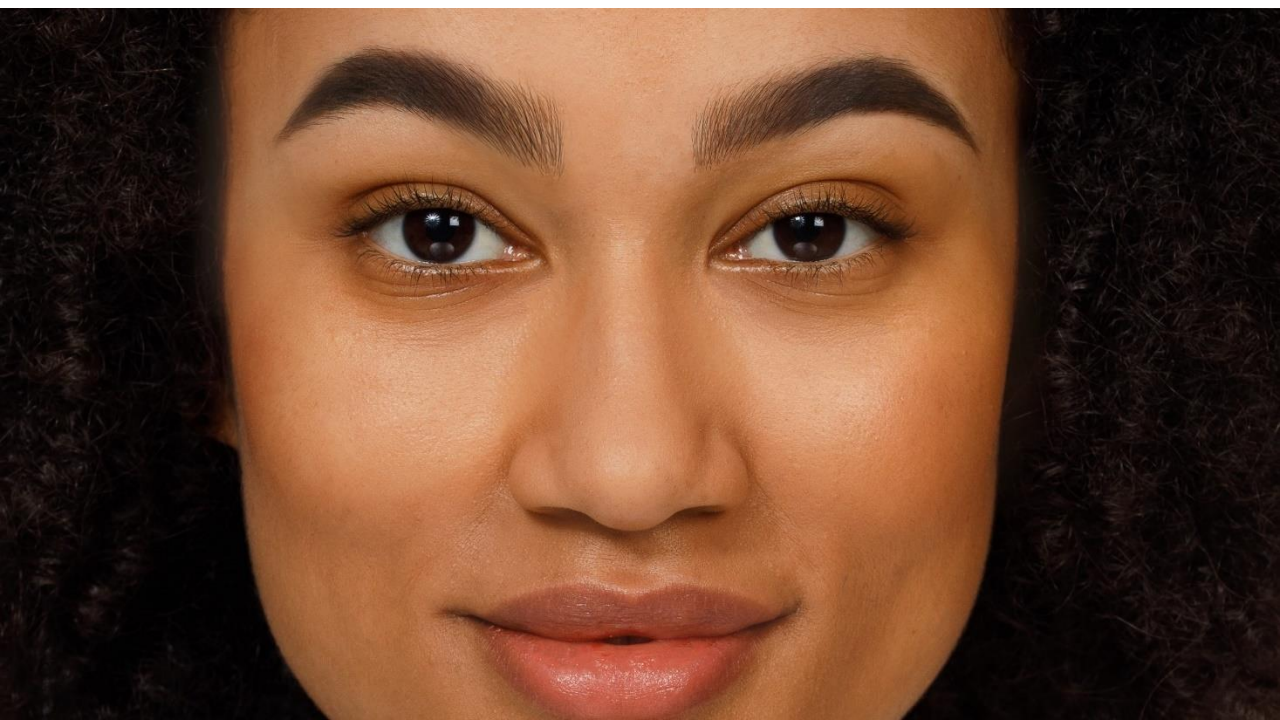


The Brow Filling Technique provides a gently restrained effect. Here, the front area of the eyebrow is completely omitted and not coloured. The transition between colour and natural hair, is worked out with the rubber spoolie.

Ideal for: Customers who naturally have particularly dense, dark and intense eyebrows but want more contour and definition.

03\_

BROW  
FILLING





## Cleaning

Clean eyebrows before tinting using the **RefectoCil Micellar Eye Make-up Remover** (or **RefectoCil Brow & Lash Foam**) and **RefectoCil Saline Solution**. If the skin is very dry, exfoliate the eyebrow area with a soft peeling product (e.g. **MasterLin Facial Peeling**)



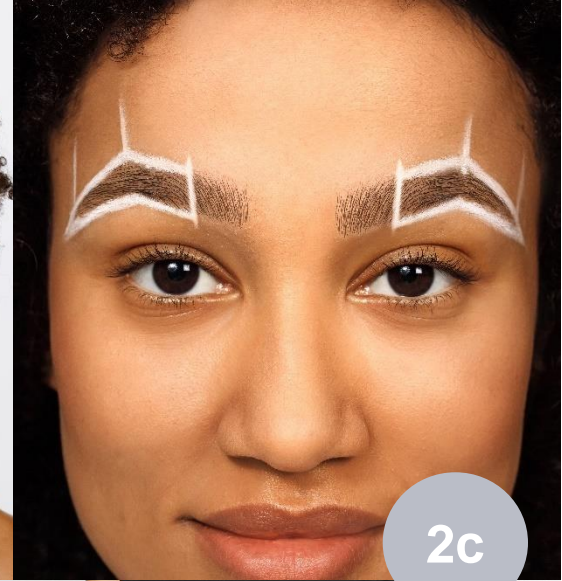
## Mapping

Measure the eyebrows according to the 3 point method, see Full Brow Technique. Connect the lines into a frame.



## Mapping

Leave out the front third and draw a boundary line if necessary.



## Mapping

The front area is not being tinted to create a very soft and natural make up effect. The next steps are applied only in the marked frame.



### Intensifying Primer

Choose the product according to the skin type. Open the **Intensifying Primer** and put a pea-sized amount into one of the cosmetic dishes. Apply it to brows and skin only in the measured template.

**Application time: 4 minutes.**



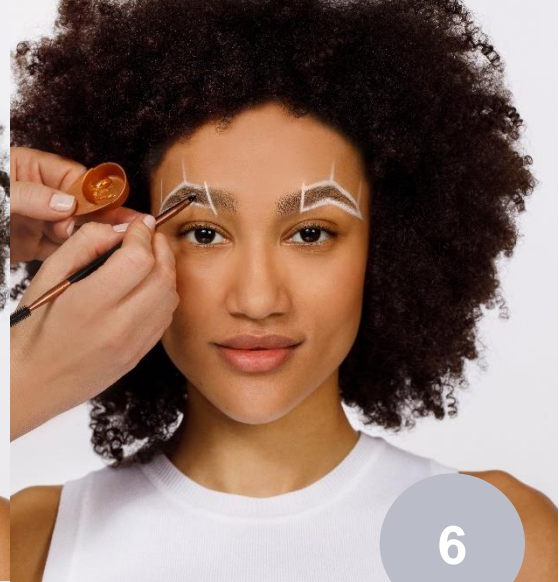
### Remove

Remove the **RefectoCil Intense Brow[n]s Intensifying Primer** using a dry cotton swab.



### Wait!

Important: Let the brows dry for **4 minutes** before the next step! To achieve best results the brows have to be dry before the next step.



### Base Gel

Use a clean brush. Select the desired colour. Open the **Base Gel (Step 1)** and squeeze a pea-sized amount of it into a clean cosmetic dish. Apply the **Base Gel** to brows & skin evenly in the direction of hair growth.

**Application time: 2 minutes!**

03\_

ING  
N  
F  
E



### Remove

Remove **Base Gel** using a dry cotton swab.



### Wait!

Important: Let the brows dry for **4 minutes** before the next step.



### Activator Gel

Use a clean brush. Open the **Activator Gel (Step 2)**. Squeeze a pea-sized amount of the **Activator Gel** into a clean cosmetic dish and apply the Activator Gel to brows & skin. **Start brushing at the end of the brow.**



### Activator Gel

Continue to the middle last part of the template. Work very precisely. **Application time: 1 minute**



### The transition

In the front area of the template, use the spoolie and brush a little beyond the boundary line to create a smooth transition to the untreated hairs.



### Remove

Remove Activator Gel with a wet cotton pad.



### Final touch

Remove any unwanted stains using a dry cotton swab with the RefectoCil Intense Brow[n]s Tint Remover. Use the RefectoCil Intense Brow[n]s Tint Remover to correct the shape of the brows if needed or to remove tint spots.



### Effect

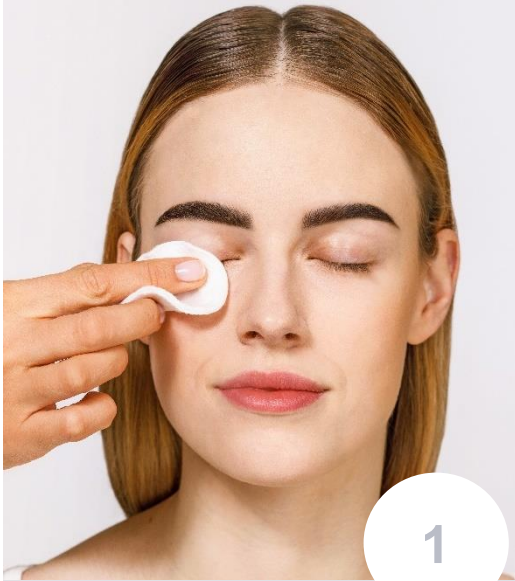
Brow Filling Look



## LASH TINTING

Eyelashes can also be dyed with RefectoCil Intense Browns. **No primer is needed for this, as no skin coloration is necessary.**

Start the application with the Base Gel. Due to the herbal ingredients, Intense Browns is particularly suitable for sensitive customers and customers that usually tend to feel uncomfortable during lash tinting.



## Clean

First remove contact lenses. Clean eyelashes before tinting using the **RefectoCil Micellar Eye Make-up Remover** (or **RefectoCil Brow & Lash Foam**) and **RefectoCil Saline Solution**.



## Eye Care Pads

Now apply the **RefectoCil Silicone Pads** or the **RefectoCil Eye Care Pads** to protect the skin against unwanted tint stains.



## Skin Protection

Use a pea-sized amount of **RefectoCil skin protection cream & eye mask**. The oily formula protects the skin from unwanted staining.



## Skin Protection

Apply the **RefectoCil Skin Protection Cream and Eye Mask** to the upper eyelid.



### Base Gel

Open the **Base Gel (Step 1)** and squeeze a pea-sized amount into a clean **RefectoCil cosmetic dish**.

**Application time: 2 minutes!**



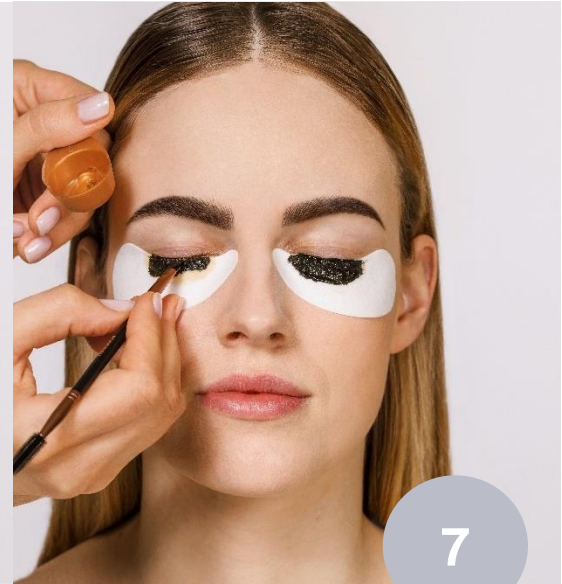
### Remove

Remove **Base Gel** using a dry cotton swab.



### Wait!

Important: For most intense and perfect results, let the lashes dry for **4 minutes** before the next step.



### Activator Gel

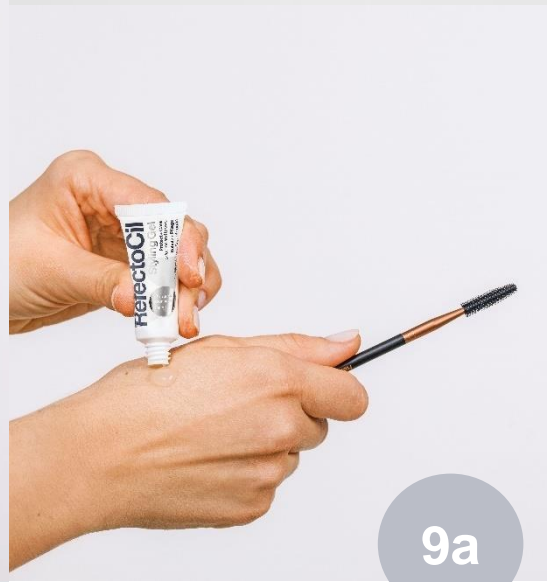
Open the **Activator Gel (Step 2)**. Squeeze a pea-sized amount of the **Activator Gel** into a clean cosmetic dish and apply the **Activator Gel** to the lashes. Work very precisely to avoid tint stains on the skin.

**Application time: 1 minute!**



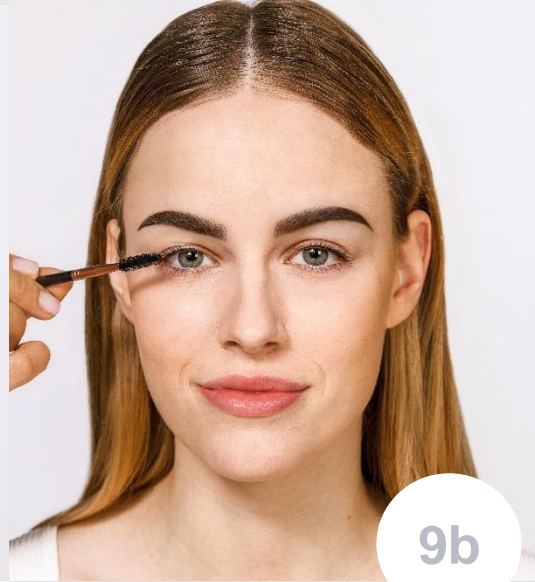
## Remove

Remove **Activator Gel** using a wet cotton pad and any unwanted stains using a dry cotton swab with the **RefectoCil Intense Brow[n]s Tint Remover**.



## Care

Apply the **RefectoCil Styling Gel** to nourish the eyebrow hair and provide shine.



## Care

**Info - In the salon:**  
For hygienic reasons it is important not to use the same brush on all customers. Remove the **Styling Gel** from the tube with a clean **RefectoCil brush** and apply it with the rubber spoolie.



## Effect

Accentuated lashes, the frame for the eye!

INTENSE BROWNS – CHEAT SHEET  
FULL BROW

**RefectoCil®**  
Intense Brow[n]s  
STYLE

PREPARE

PRIMER

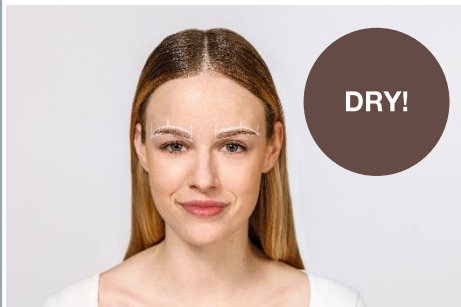
4 min

BASE GEL

2 min

ACTIVATOR GEL

1 min



REPEAT FULL BROW STEPS.  
APPLY ACTIVATOR GEL WITH  
RUBBER SPOULI AT THE  
FRONT PART.



BROW INTENSIFYING – CHEAT SHEET  
**BROW FILLING**

REPEAT FULL BROW BASIC STEPS. DO NOT TINT THE  
FRONT PART OR ANY OTHER PART OF THE BROW THAT  
DOESN'T NEED TO BE INTENSIFIED.



INTENSE BROWNS – CHEAT SHEET  
**OMBRE SHADING**

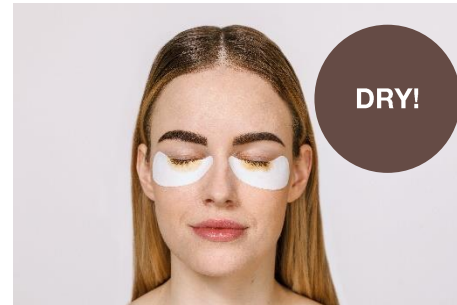
INTENSE BROWNS – CHEAT SHEET  
LASH TINTING

PREPARE



BASE GEL

2  
min



ACTIVATOR GEL

1  
min



# Aftercare info

**For maximum durability, consider the following:**

## **First 24h**

- No products containing oil
- No water, do not go swimming, avoid hot baths/sauna
- Do not use eye cream
- Keep eyebrows dry
- Do not touch eyebrows

## **After 24h**

- For a long skin tint, treat the eyebrow area without oily or peeling products if possible.
- Styling gel possible daily as care for the hairs.



# FAQ

## Is Intense Browns suitable for every customer?

No. We now have 2 different coloring systems in the portfolio, and the professional must find out what best meets the customer's needs.

## How does the result differ from oxidative tints to Intense Brow[n]s?

Oxidative colours tint the hair. The effect lasts up to 6 weeks.

Intense Brow[n]s tints hair and skin!

There is an intense make-up effect on the skin, which lasts up to 10 days. The coloring of the hairs lasts up to 6 weeks.

## The result is blotchy, what can I do?

- Dry well between steps
- be careful not to get any creamy products on the brows
- exfoliate in advance and cleanse really well: the skin should be smooth, oil-free and dry
- you can repeat the process or correct it: just apply Colour Gel (2min) and Activator (1 min) again
- always take fresh Activator: do not apply the product on one spot and smudge it, but always apply fresh Activator on the brush

## What is the difference to henna?

Henna are pure plant extracts that are mixed with water and then remain on the skin for up to 25 minutes. The pure plant extracts can cause allergic reactions, especially in people who have allergies to grasses.

## The result is too dark or not clean, what can I do?

- directly afterwards, a lot can be removed with the Tint Remover.
- with a cotton swab and Tint Remover small irregularities can be repaired

## How often can the service be repeated?

RefectoCil tinting is gentle and can therefore be repeated at any time. Ideally, as soon as the effect has worn off.

# FAQ

## **Can the Intense Brow[n]s Base Gels be mixed?**

Only the Base Gels can be mixed to create even more shades. Attention: The Activator Gel is still only applied in the 2nd step and is not mixed with the Base Gels.

## **Can I use Intense Brow[n]s if the client has had an allergic reaction to oxidative tints?**

Yes, because Intense Brow[n]s consist of different ingredients. Nevertheless, we recommend an allergy test before application.

## **Can Intense Brow[n]s be used on pregnant women?**

Generally, we do not see any problems using tints while being pregnant. We have no information about any negative effects after using the tints during pregnancy, but please note that we did not conduct any special studies with pregnant women. Further, as a manufacturing company we don't have the necessary medical knowledge and we therefore can't give any medical advice.



RefectoCil®  
*Academy*

GW COSMETICS®

**We are always happy to support you!**

If you have any questions, please contact the RefectoCil® sales team.